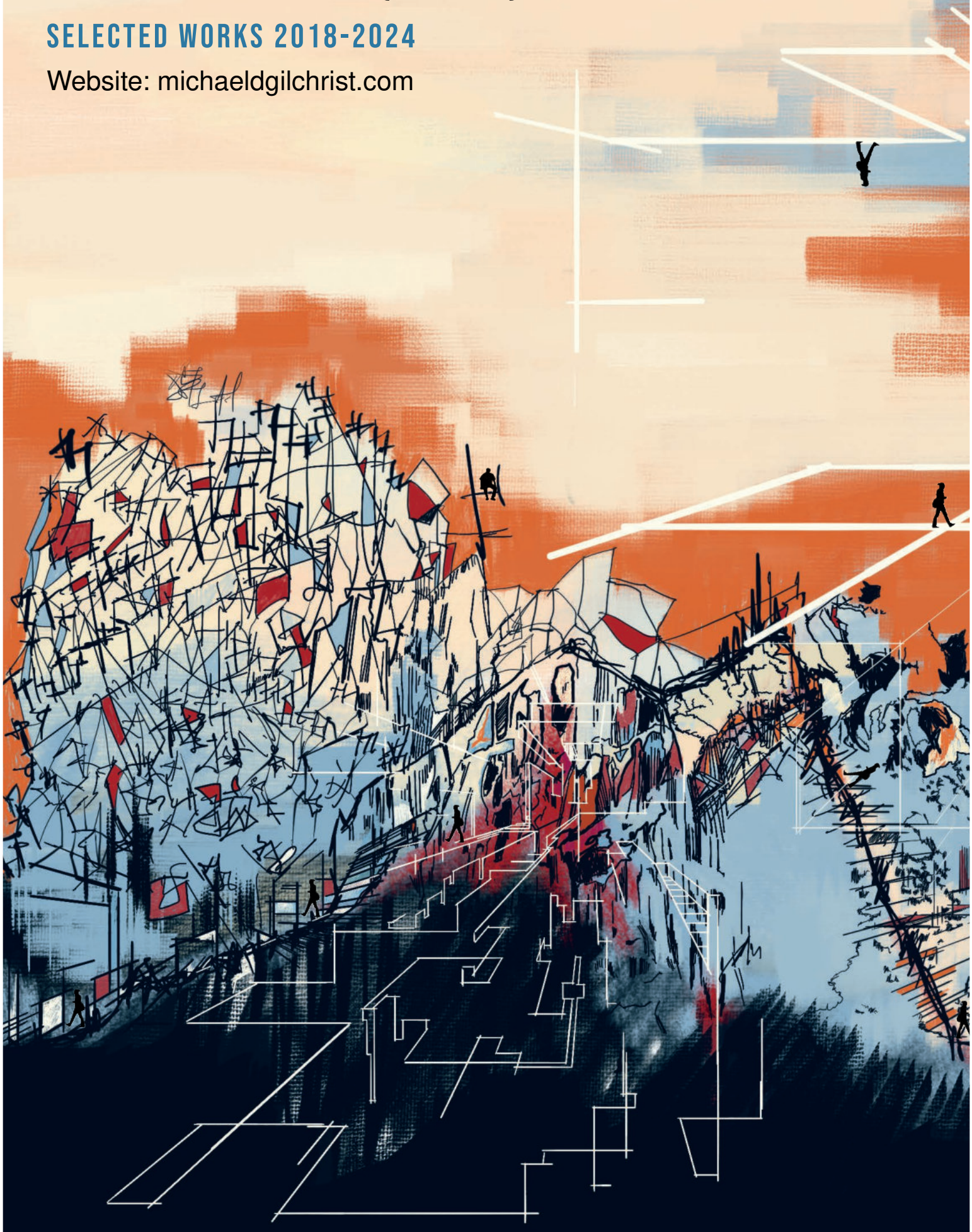


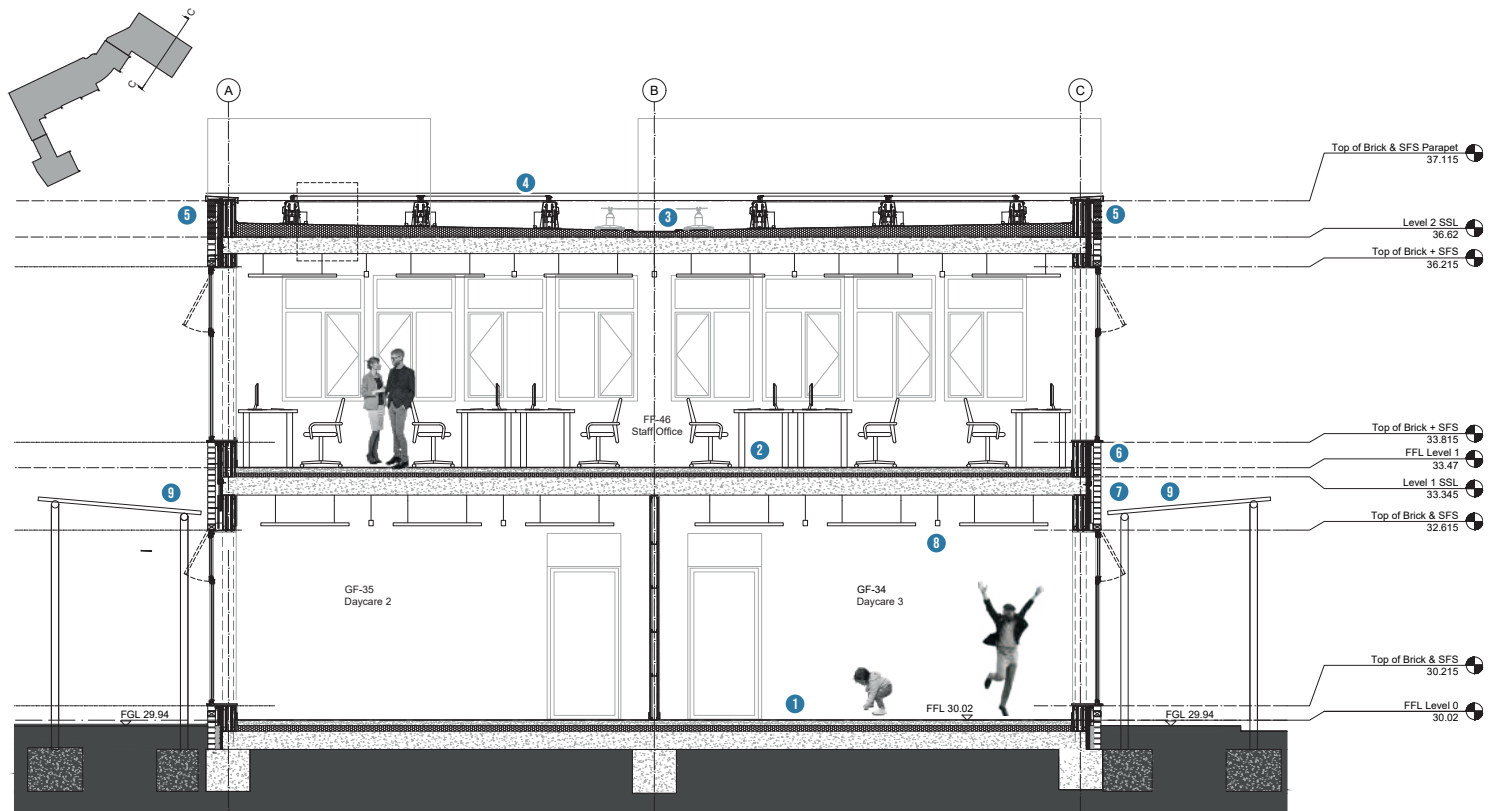
MICHAEL D. GILCHRIST BSc (Hons), MArch, ARB

ARCHITECT PORTFOLIO (SAMPLE)

SELECTED WORKS 2018-2024

Website: michaeldgilchrist.com





1 GROUND FLOOR
VINYL ON
75MM SCREED WITH UFH ON
75MM INSULATION ON DPM ON
CONCRETE SLAB

2 FIRST FLOOR
VINYL ON
75MM SCREED WITH UFH ON
50MM INSULATION ON
500 GAUGE SLIP MEMBRANE ON
CONCRETE SLAB EITHER EXPOSED OR WITH
SUSPENDED CEILING.

3 ROOF
SINGLE PLY ROOFING ON
TAPERED KINGSPAN INSULATION ON
VLC ON
CONCRETE SLAB

4 PHOTOVOLTAICS
5 PARAPET
COPING ON DPC ON
12MM PLYWOOD CAPPING ON
CAVITY CLOSER

6 EXTERNAL WALL TYPE 1
FACING BRICK ON
CAVITY ON
WALL TIES ON
50MM ROCKWOOL DUO SLAB ON
BREATHER MEMBRANE ON
12.5MM SHEATHING BOARD ON
150MM ROCKWOOL FLEXI WITH
150MM SFS FRAMING ON
VAPOUR CONTROL LAYER ON
12MM PLYWOOD ON
12.5MM PLASTERBOARD.

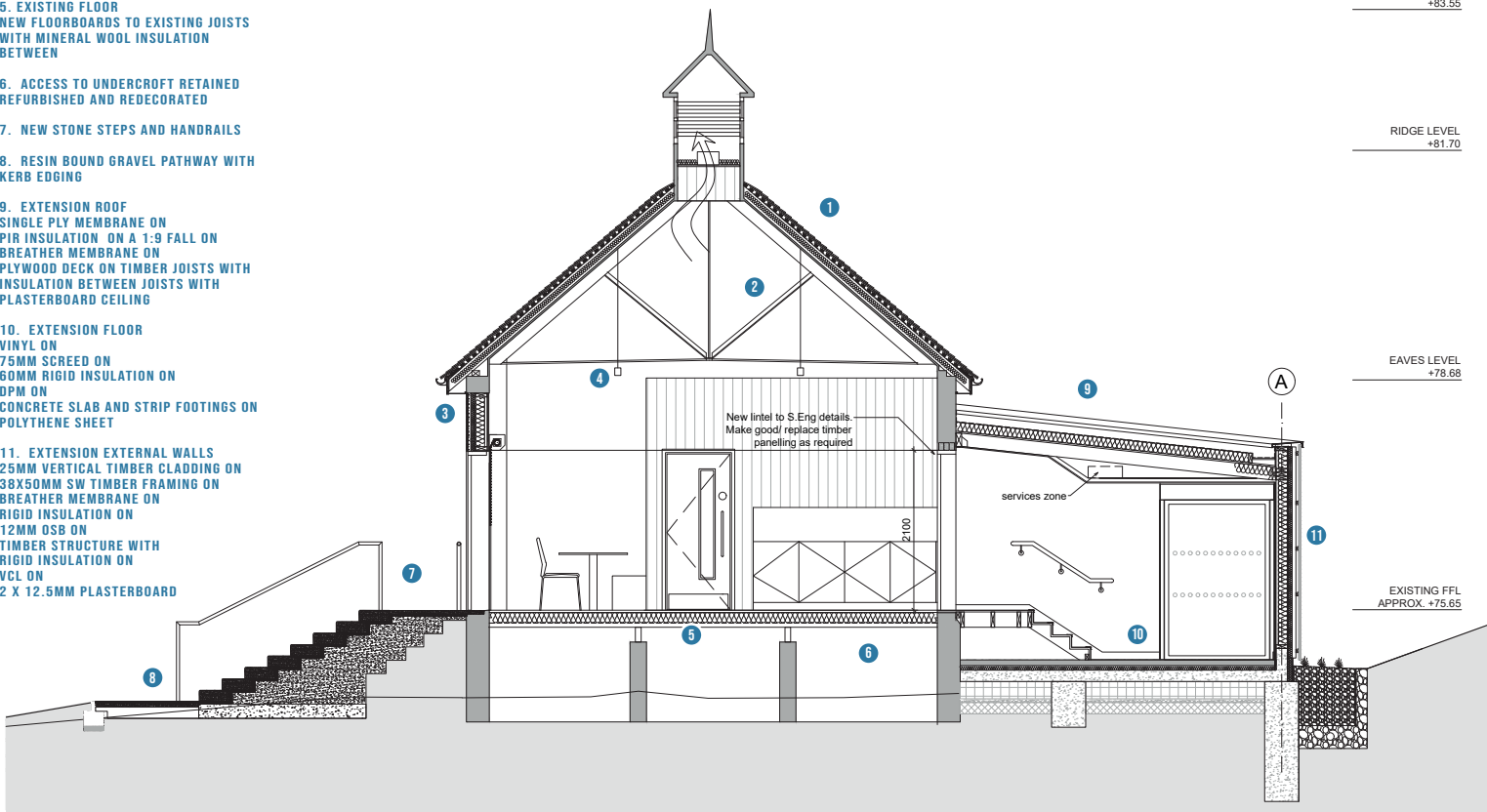
7 EXTERNAL WALL TYPE 2
METAL RAINSCREEN CLADDING ON
SECONDARY SUPPORT FRAMEWORK ON
50MM ROCKWOOL DUO SLAB ON
BREATHER MEMBRANE ON
12.5MM SHEATHING BOARD ON
150MM ROCKWOOL FLEXI WITH
150MM SFS FRAMING ON
VAPOUR CONTROL LAYER ON
12MM PLYWOOD ON
12.5MM PLASTERBOARD.

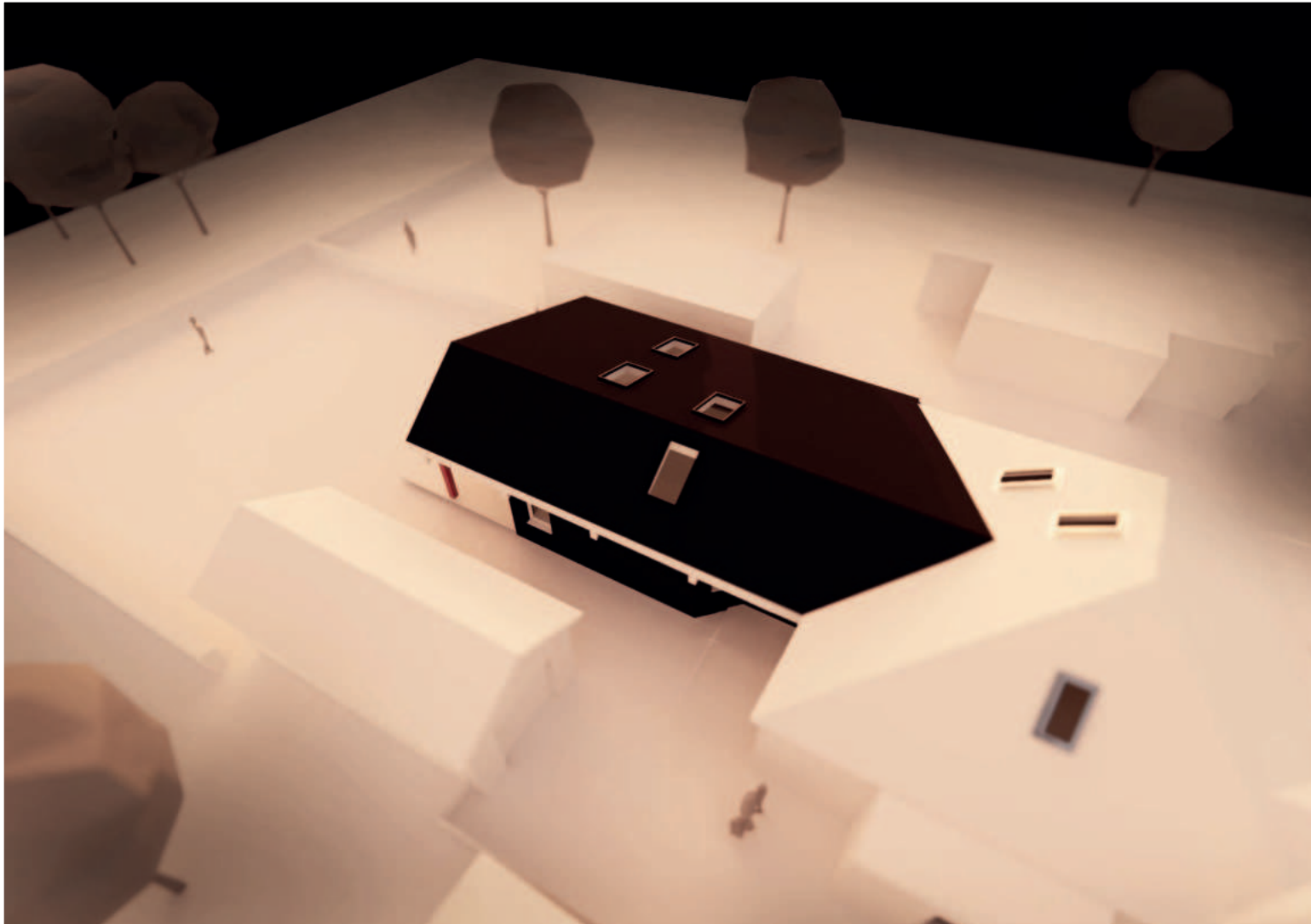
8 ACOUSTIC PANELS & LED LIGHTS

9 EXTERNAL CANOPY



- 1 EXISTING ROOF
ROOF TILING
- 2. REDECORATE EXISTING STEEL
TRUSSES
- 3. NEW EXTERNAL WALL TYPE TO
EXISTING
- 4. SUSPENDED LIGHTING
- 5. EXISTING FLOOR
NEW FLOORBOARDS TO EXISTING JOISTS
WITH MINERAL WOOL INSULATION
BETWEEN
- 6. ACCESS TO UNDERCROFT RETAINED
REFURBISHED AND REDECORATED
- 7. NEW STONE STEPS AND HANDRAILS
- 8. RESIN BOUND GRAVEL PATHWAY WITH
KERB EDGING
- 9. EXTENSION ROOF
SINGLE PLY MEMBRANE ON
PIR INSULATION ON A 1:9 FALL ON
BREATHER MEMBRANE ON
PLYWOOD DECK ON TIMBER JOISTS WITH
INSULATION BETWEEN JOISTS WITH
PLASTERBOARD CEILING
- 10. EXTENSION FLOOR
VINYL ON
75MM SCREED ON
60MM RIGID INSULATION ON
DPM ON
CONCRETE SLAB AND STRIP FOOTINGS ON
POLYTHENE SHEET
- 11. EXTENSION EXTERNAL WALLS
25MM VERTICAL TIMBER CLADDING ON
38X50MM SW TIMBER FRAMING ON
BREATHER MEMBRANE ON
RIGID INSULATION ON
12MM OSB ON
TIMBER STRUCTURE WITH
RIGID INSULATION ON
VCL ON
2 X 12.5MM PLASTERBOARD





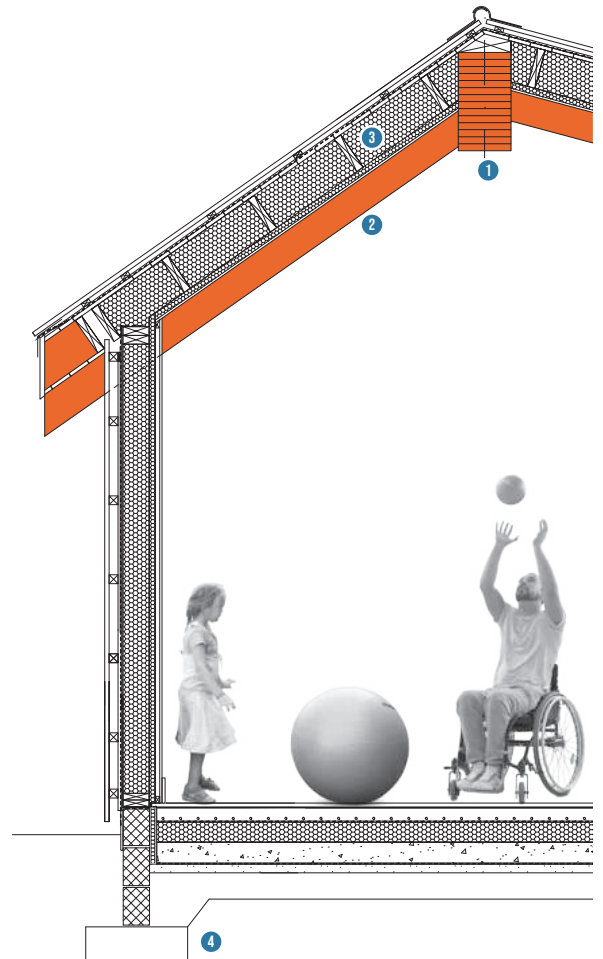
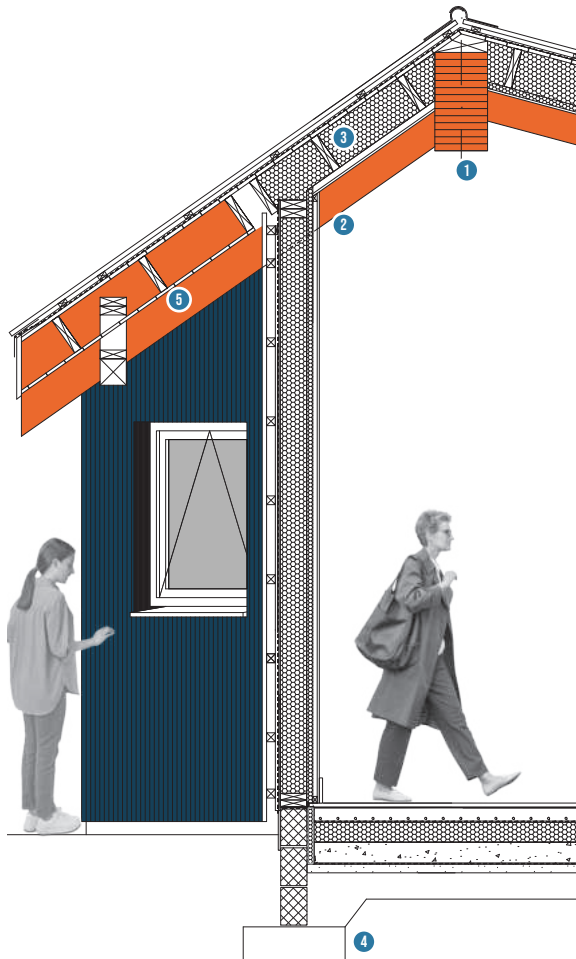
1 GLULAM RIDGE BEAM
300X560MM GL28H GLULAM RIDGE BEAM

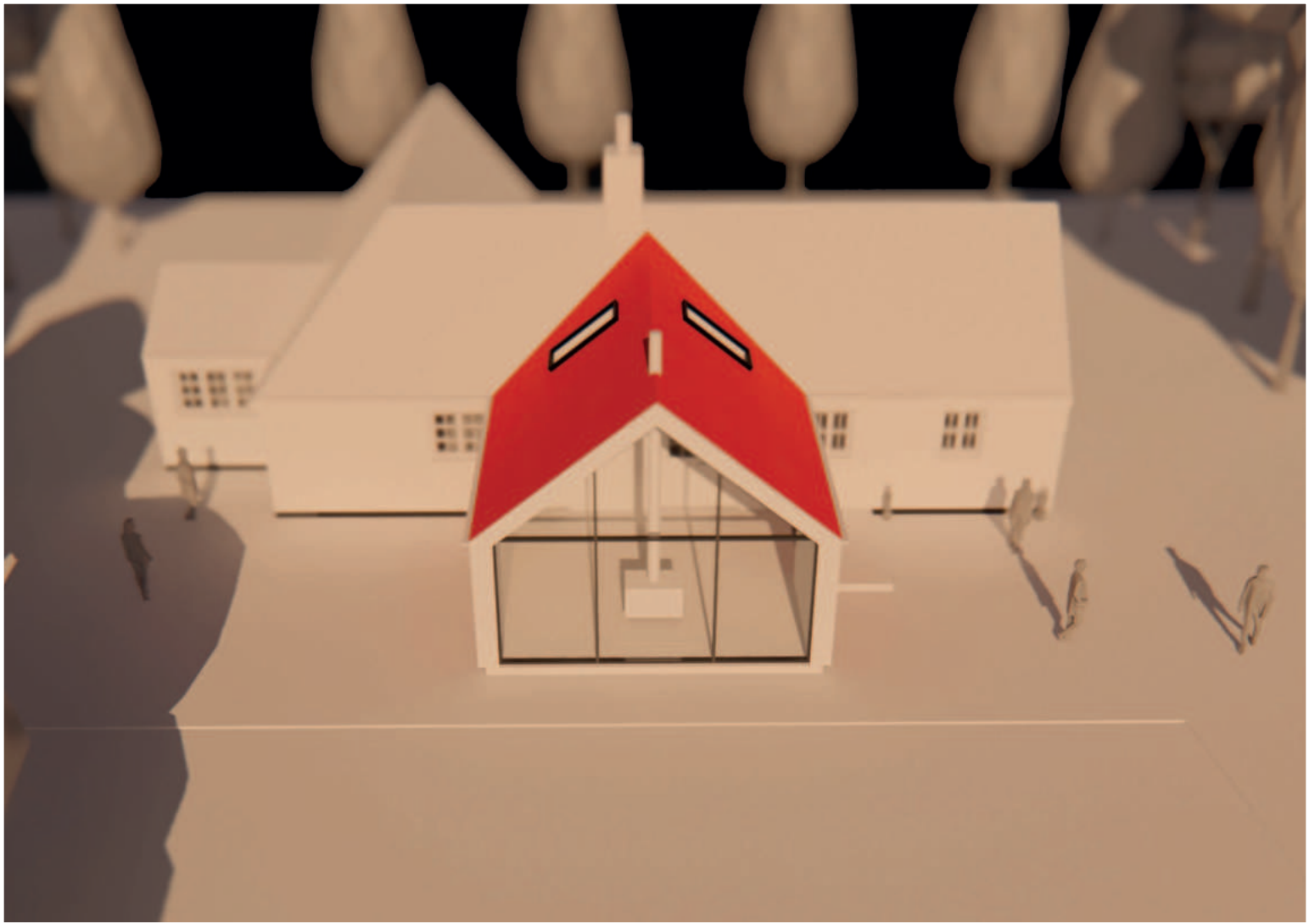
2 GLULAM FEATURE RAFTERS
45X225MM C24 TIMBER RAFTERS
@600MM CRS FIXED TO 200X440MM
GL28H GLULAM FEATURE RAFTER

3 TIMBER RAFTERS
225X45MM C24 RAFTERS @600CRS
FIXED TO GLULAM FEATURE RAFTERS
WITH SIMPSON SAE 380/45 HANGERS

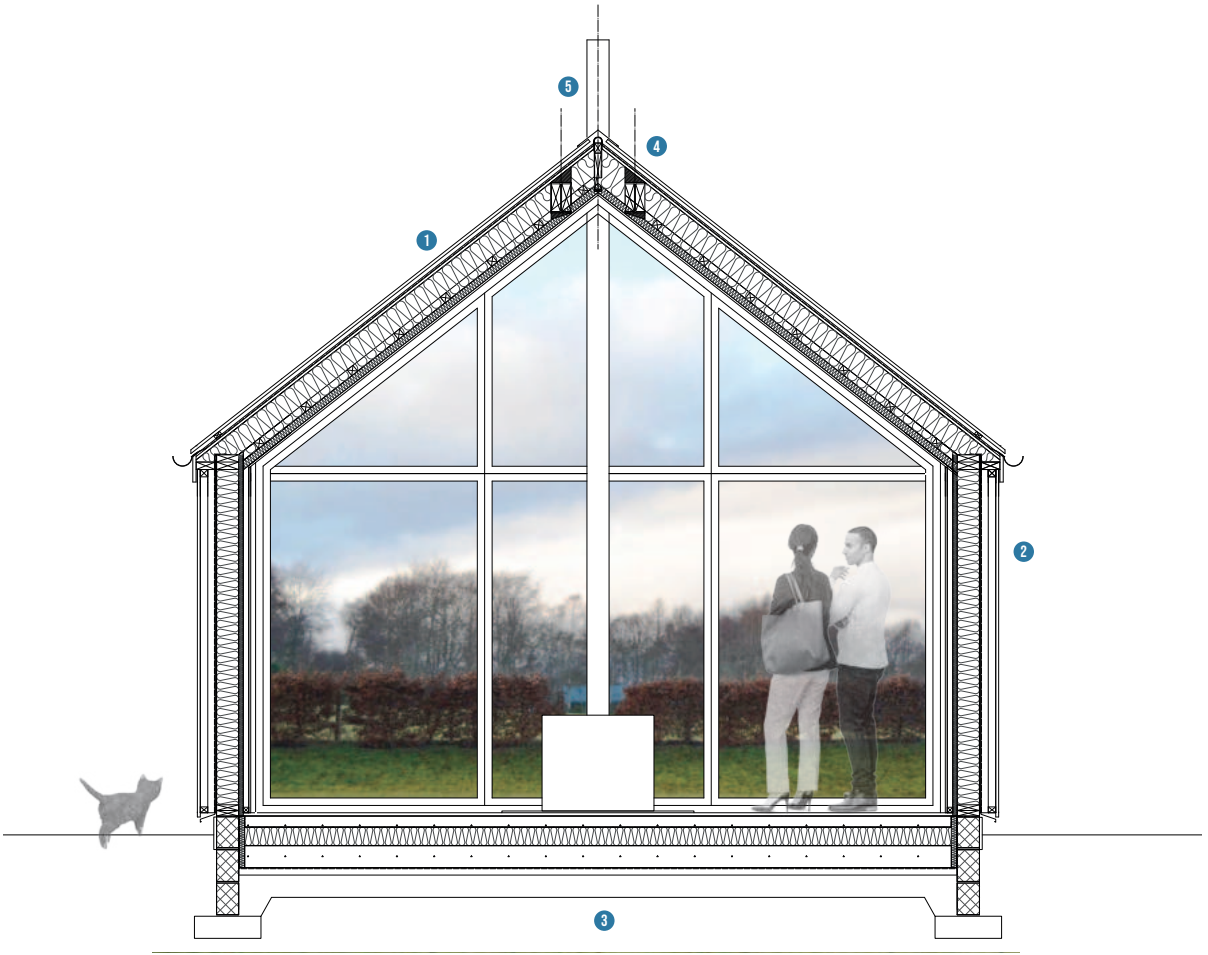
4 FOUNDATIONS
MINIMUM 450MM, 750X200MM DEEP
GRADE STRIP FOOTING WITH 1NO. LAYER
A393 MESH TO BOTTOM FACE

5 CANOPY
150X150MM DOUGLAS FIR CANOPY BEAM
FIXED TO 3NO 47X225MM C24 TIMBERS
SPIKED AND 150X150MM DOUGLAS FIR
CANOPY POST





- 1 ROOF**
CORRUGATED METAL CLADDING ON
50X50MM TIMBER BATTENS ON
12X38MM TIMBER BATTENS ON
PROCTOR ROOFSHIELD BREATHER
MEMBRANE ON
18MM TIMBER SARKING ON
195X45MM C16 RAFTERS ON
50MM BATTENS WITH
195MM ROCKWOOL INSULATION BETWEEN
THE JOISTS ON
50MM FOIL FACED RIGID INSULATION ON
12.7MM PLASTERBOARD
- 2 WALL**
CORRUGATED METAL CLADDING ON
50X50MM TREATED SW HORIZONTAL
BATTENS ON
50X12MM VERTICAL SW BATTENS ON
BREATHER MEMBRANE ON
9.5MM PLYWOOD ON
150X50MM TIMBER STUDS WITH
150MM RIGID INSULATION ON
35MM FOIL FACED RIGID INSULATION ON
25MM SERVICE VOID CREATED BY
25X50MM SW BATTENS ON
12.7MM FOIL BACK PLASTERBOARD
- 3 FLOOR**
16MM THICK RUSSWOOD OAK T&G TIMBER
FLOORING ON
75MM SCREED WITH
UNDERFLOOR HEATING ON
VAPOUR CONTROL LAYER ON
125MM RIGID INSULATION ON
150MM CONCRETE SLAB ON
DAMP PROOF MEMBRANE ON
50MM BLINDING ON
150MM HARDCORE WITH
600X150MM CONCRETE STRIP
FOUNDATION TO THE FRONT+
450X150MM CONCRETE STRIP
FOUNDATION TO THE SIDES
- 4 ROOF RIDGE DETAIL**
245X45 C16 RIDGE BOARD
195X45 C16 RAFTERS @600MM CRS
FIXED TO RIDGE BOARD AND BEAMS WITH
SIMPSON STRONG TIE SPR HANGER WITH
2NO. 203X133X30 S3FF UB FIXED TO
GABLE PORTAL FRAME WITH
TIMBER FILLET PIECES FIXED TO TOP &
U/S OF UB RIDGE BEAMS
- 5 FLUE**
FLUE TRIMMED OUT IN 195X45 C16
TIMBERS





1 ROOF
 39 DEGREE PITCH
 SALVAGED SLATE ON
 60X145MM C24 RAFTERS @600MM
 CRS ON 295MM DEEP FLITCH BEAMS
 AS PURLINS SPANNING TIMBER ROOM
 TRUSSES @1.5M CRS ON
 2 NO 225MM DEEP 100MM WIDE TIMBER
 KING TRUSSES

2 REMOVABLE ROOF
 SINUSOIDAL KS100 SRW INSULATED ROOF
 PANEL (40MM CORE) ON
 GALVANISED STEEL TOP-HATS ON
 PROCTOR ROOFSHIELD ON
 10MM SARKING ON
 295MM DEEP FLITCH BEAMS AS
 DEMOUNTABLE TIMBER PURLINS ON
 2 NO 225MM DEEP 100MM WIDE TIMBER
 FRAME ON TIMBER KING TRUSSES

3 WALL TYPE 1
 ACCORD 14/3 SINUSOIDAL CORRUGATED
 GALVANISED STEEL CLADDING FINISHED
 IN PLASTISOL ANTHRACITE GREY RAL
 7016 0.7MM GAUGE ON
 CLADDING RAILS ON
 STEEL FRAME ON
 140MM BLOCKWORK ON
 20MM SMOOTH INTERNAL CEMENT
 RENDER

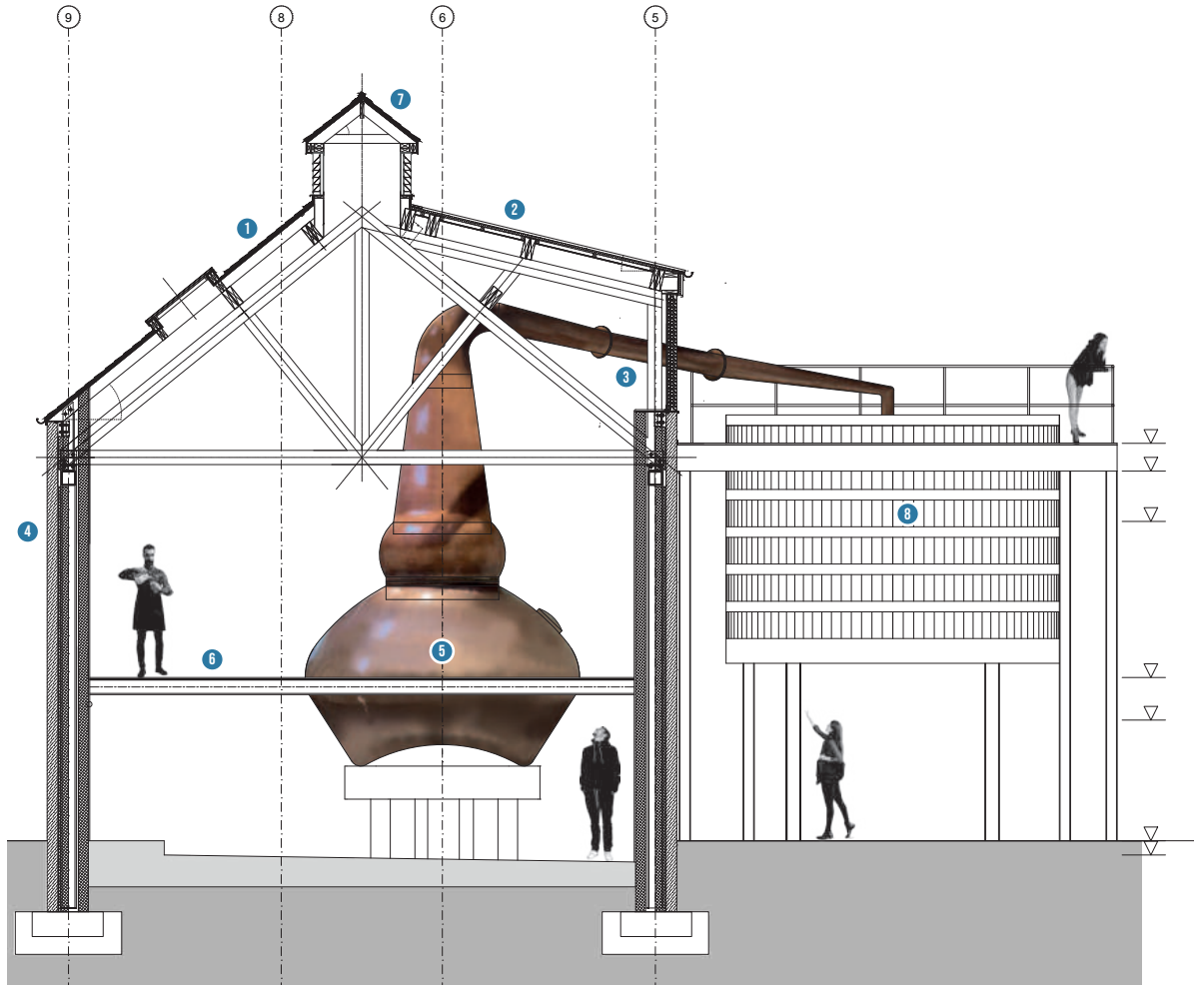
4 WALL TYPE 2
 150MM STONEMASONRY ON
 140MM BLOCKWORK ON
 140MM CAVITY ON
 140MM BLOCKWORK ON
 20MM : 2 COATS SMOOTH INTERNAL
 CEMENT RENDER WITH
 VISQUEEN ZEDX CPT HIGH PERFORMANCE
 DPC 150MM ABOVE FFL

5 STILLS - WASH AND SPIRIT

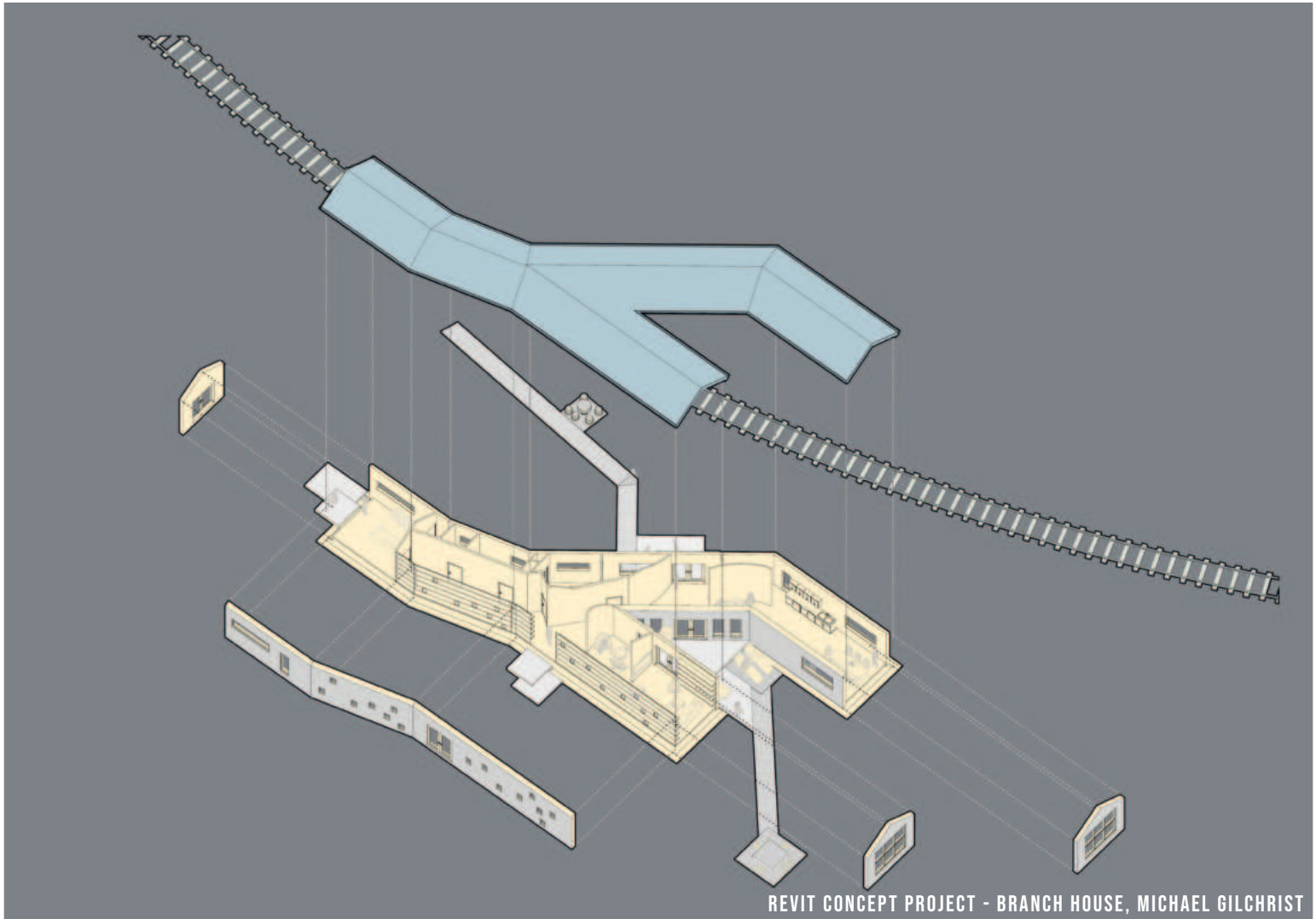
6 MEZZANINE FLOOR
 DIAMOND PATTERN DURBAR PLATE
 FLOORING WITH
 PAINT FINISH FIXED TO
 25MM STEELWAY SQUARE MESH

7 CUPULA
 38 DEGREE TO MATCH EXISTING
 SALVAGED SLATES ON
 PROCTOR ROOFSHIELD ON
 22MM TIMBER SARKING ON
 150MM TIMBER RAFTERS WITH
 ALUMINIUM FASCIA ON PLYWOOD

8 WORM TUBS







REVIT CONCEPT PROJECT - BRANCH HOUSE, MICHAEL GILCHRIST



REVIT CONCEPT PROJECT - ADAPTABLE FACADE, MICHAEL GILCHRIST





